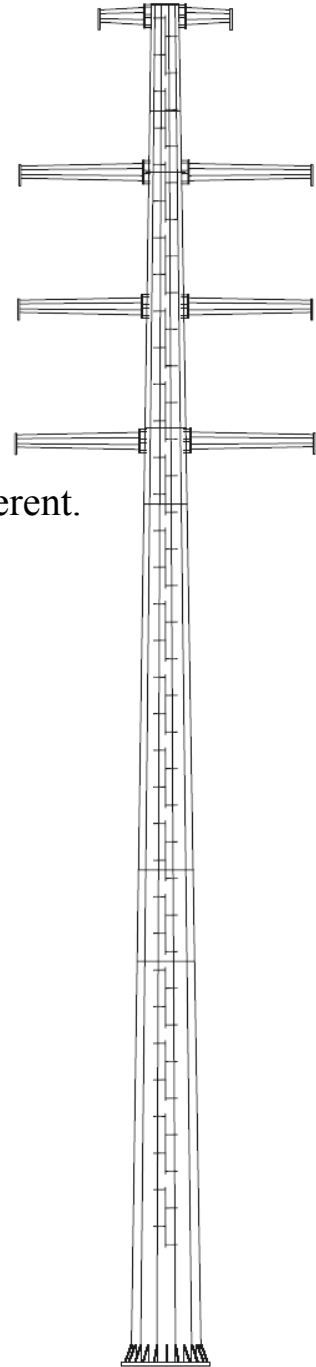


TECHNICAL DATA

Transmission Line Tower

- This type of mast is suitable for power
3.3KV
20KV
63KV
132KV
230KV
- Minimum height 8 m till Maximum height 35 m.
- Thickness and Diameter dependent type of line different.
- Thickness of galvanization is 80 μ .
- Polygon structure with 8 & 12 & 16 sides.
- Hot dip galvanized steel sheet structure.
- Type of steel is St37 & St52.
- Standard:
 - ASCE (for structure designing)
 - ASTM-A123 (for galvanization)



TECHNICAL DATA

Telecommunication mast

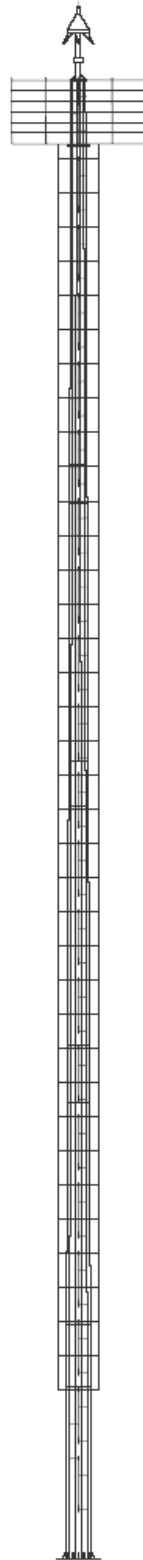
- Type of structure:
 - Flanged
 - Overlapped
- Suitable for x-pole and v-pole antenna fixture.
- Minimum height 4 m till Maximum height 60 m.
- Thickness of galvanization is 80 μ .
- Polygon structure with 8 & 12 & 16 sides.
- Hot dip galvanized steel sheet structure.
- Type of steel is St37.
- Standard:
 - ASTM-A123 (for galvanization)
 - EIA-222-F



TECHNICAL DATA

Lightning poles

- Minimum height 4 m till Maximum height 45 m.
- Thickness of galvanization is 80 μ .
- With polygon structure with 8 sides. (Under 14 meters)
- Polygon structure with 12 and 16sides. (Up to 14 meters)
- Hot dip galvanized steel sheet structure.
- Type of steel is St37
- Standard:
 - ASCE (for structure designing)
 - ASTM-A123 (for galvanization)
 - ASTM (for material)



TECHNICAL DATA

Lighting towers

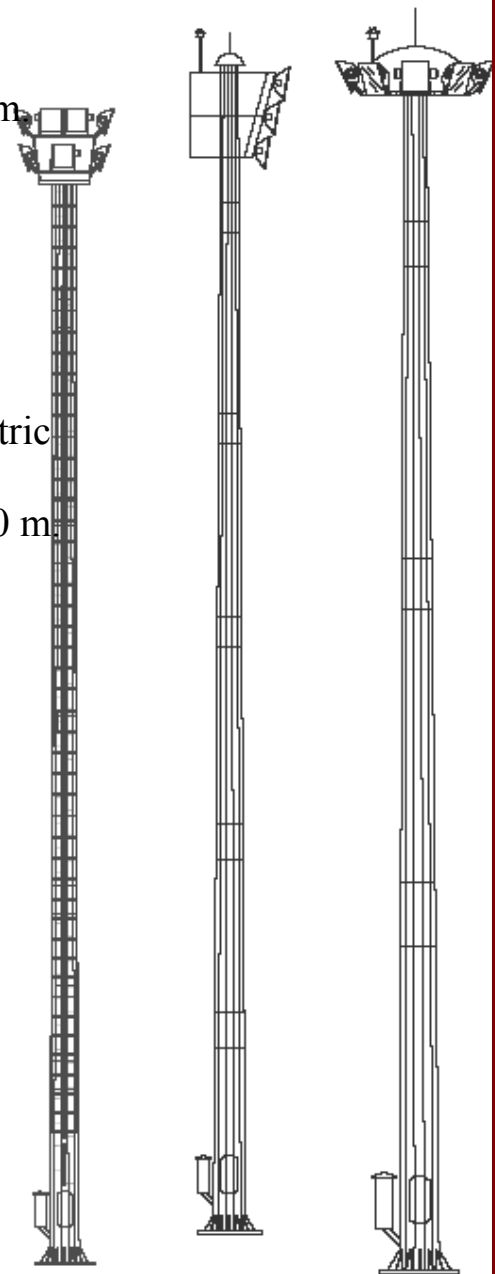
- Type of towers
 - Fixed head
 - Mobile head
 - Hinged

Fixed head

- Accommodate up to 40 floodlights
- Minimum height 15m till Maximum height 30m
- Thickness of galvanization is 80 μ .
- Polygon structure with 12 or 16 sides
- Hot dip galvanized steel sheet structure.
- Type of steel is St37

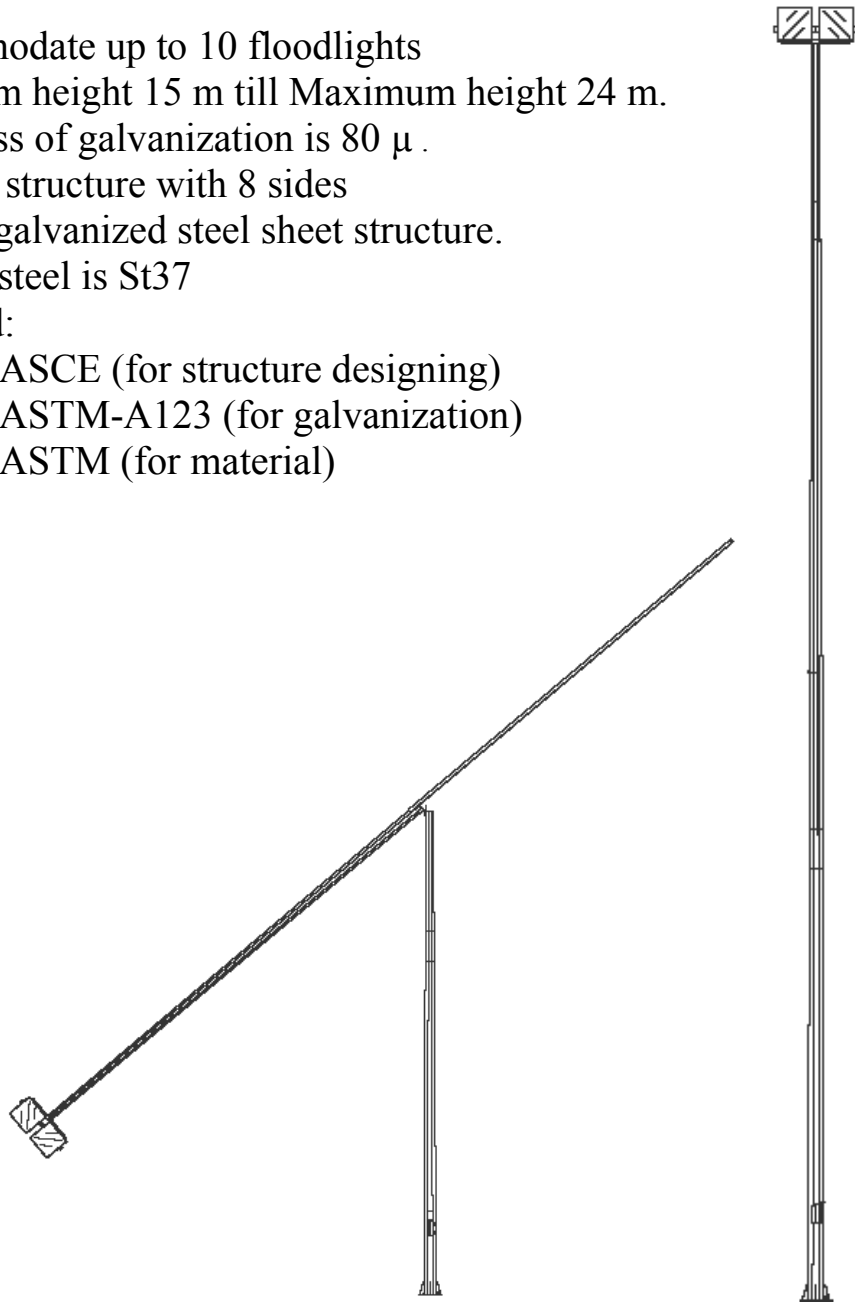
Mobile head

- Accommodate up to 30 floodlights for symmetric head & 20 floodlights for unilateral head
- Minimum height 15 m till Maximum height 30 m
- Thickness of galvanization is 80 μ .
- Polygon structure with 12 or 16 sides
- Hot dip galvanized steel sheet structure.
- Type of steel is St37



Hinged

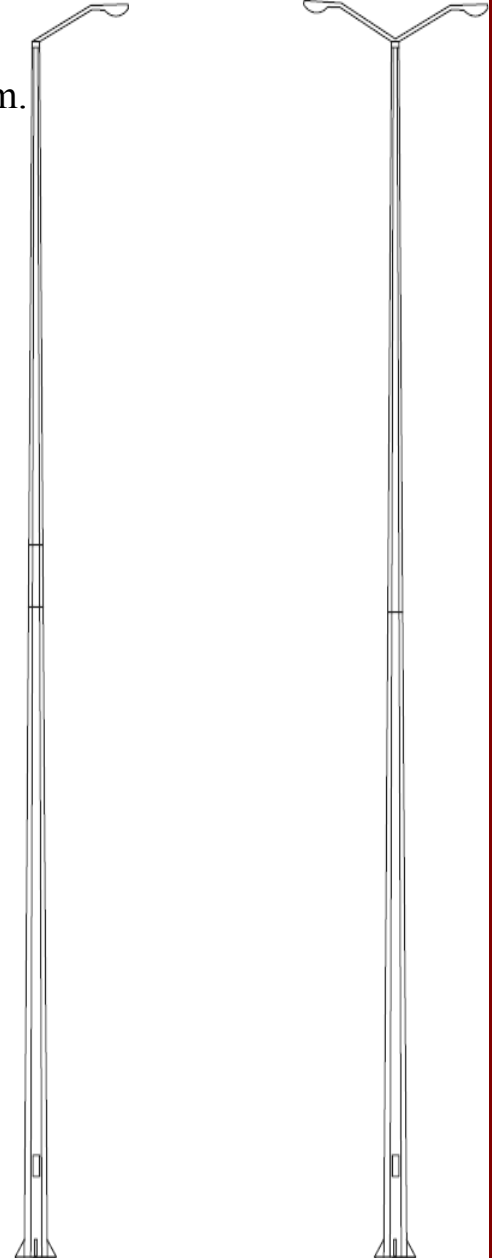
- Accommodate up to 10 floodlights
- Minimum height 15 m till Maximum height 24 m.
- Thickness of galvanization is 80 μ .
- Polygon structure with 8 sides
- Hot dip galvanized steel sheet structure.
- Type of steel is St37
- Standard:
 - ASCE (for structure designing)
 - ASTM-A123 (for galvanization)
 - ASTM (for material)



TECHNICAL DATA

Lighting street poles

- Type of poles:
 - Fixed head
 - Hinged poles
- Accommodate up to 8(1×400) floodlights
- Minimum height 4 m till Maximum height 14 m.
- Thickness of galvanization is 80 μ .
- Polygon structure with 8 sides
- Hot dip galvanized steel sheet structure.
- Type of steel is St37
- Standard:
 - ASCE (for structure designing)
 - ASTM-A123 (for galvanization)
 - ASTM (for material)
 - BS (for Lighting Street)



TECHNICAL DATA

Stadium light poles

- Type of poles:
 - Fixed head
 - Mobile head
- Accommodate up to 20(1×400) floodlights in Mobile head
- Accommodate up to 45(1×400) floodlights in Fixed head
- Minimum height 14 m till Maximum height 35 m.
- Thickness of galvanization is 80 μ .
- Polygon structure with 12 or 16 sides
- Hot dip galvanized steel sheet structure.
- Type of steel is St37
- Standard:
 - ASCE (for structure designing)
 - ASTM-A123 (for galvanization)
 - ASTM (for material)
 - BS (for Lighting Street)

